

Sports and Recreational Facilities

1100 Introduction

Chapter 11 addresses access to recreation facilities, including play areas, swimming pools, sports facilities, fishing piers, boating facilities, golf courses, amusement rides and numerous adaptive sports. Adaptive sports addressed in Chapter 11 include archery, wheelchair basketball, beep ball, bocce, bowling, cycling, curling, equestrian, goal ball, judo, rugby, skiing, sled hockey, wheelchair tennis, wheelchair track, sitting volleyball, and wheelchair softball.

Areas of play for many sports may need additional modifications to allow individuals with disabilities to participate in the adaptive sports and recreation activities addressed in this document. Providing adaptable team bench areas, tactile surfaces, space for temporary wheelchair storage, equipment storage areas, and specialized equipment allows people with all types of disabilities the ability to play sports on a team, in venues and on fields built for mainstream sports and recreation which include requirements for accessibility in locker rooms, team seating areas, and accessible routes to fields and areas of play.

1101 General

1101.1 Scope.

Sports and recreational facilities required to be accessible by the scoping provisions adopted by the administrative authority shall comply with the applicable provisions of Chapter 11.

1101.2 Special Provisions.

1101.2.1 General Exceptions.

The following shall not be required to comply with this standard or to be on an accessible route:

1. Raised structures used solely for refereeing, judging, or scoring a sport.
2. Water slides.
3. Animal containment areas that are not for public use.
4. Raised boxing or wrestling rings.
5. Raised diving boards and diving platforms.
6. Bowling lanes that are not required to provide wheelchair spaces.
7. Mobile or portable amusement rides.
8. Amusement rides that are controlled or operated by the rider.
9. Amusement rides designed primarily for children, where children are assisted on and off the ride by an adult.
10. Amusement rides that do not provide amusement ride seats.

1101.2.2 Area of Sport Activity.

Areas of sport activity shall be served by an accessible route and shall not be required to be accessible except as provided in Chapter 11.

1101.2.3 Recreational Boating Facilities.

Operable parts of cleats and other boat securement devices shall not be required to comply with IDG Section 308.

1101.2.4 Exercise Machines and Equipment.

Accessible exercise machines and exercise equipment shall comply with IDG Section 309 or provide operable parts that are adjustable.

1101.3 Protruding objects.

Protruding objects on circulation paths shall comply with IDG Section 307.

EXCEPTIONS:

1. Within areas of sport activity, protruding objects on circulation paths shall not be required to comply with IDG Section 307.
2. Within play areas, protruding objects on circulation paths shall not be required to comply with IDG Section 307 provided that ground level accessible routes provide vertical clearance complying with IDG Section 1008.2.

1102 Amusement Rides

1102.1 General.

Accessible amusement rides shall comply with Section 1102.

1102.2 Accessible Routes.

Accessible routes serving amusement rides shall comply with IDG Chapter 4.

EXCEPTIONS:

1. In load or unload areas and on amusement rides, where complying with IDG Section 405.2 is not structurally or operationally feasible, ramp slope shall be permitted to be 1:8 maximum.
2. In load or unload areas and on amusement rides, handrails provided along walking surfaces complying with IDG Section 403 and required on ramps complying with IDG Section 405 shall not be required to comply with IDG Section 505 where complying is not structurally or operationally feasible.

1102.3 Load and Unload Areas.

A turning space complying with IDG Section 304 shall be provided in load and unload areas.

1102.4 Wheelchair Spaces in Amusement Rides.

Wheelchair spaces in amusement rides shall comply with Section 1102.4.

1102.4.1 Floor Surface.

The floor surface of wheelchair spaces shall be stable and firm.

1102.4.2 Slope.

The floor surface of wheelchair spaces shall have a slope not steeper than 1:48 when in the load and unload position.

1102.4.3 Gaps.

Floors of amusement rides with wheelchair spaces and floors of load and unload areas shall be coordinated so that, when amusement rides are at rest in the load and unload position, the vertical difference between the floors shall be within plus or minus 5/8 inch (16 mm) and the horizontal gap shall be 3 inches (75 mm) maximum under normal passenger load conditions.

EXCEPTION: Where complying is not operationally or structurally feasible, ramps, bridge plates, or similar devices complying with the applicable requirements of 36 CFR 1192.83(c) shall be provided.

1102.4.4 Clearances.

Clearances for wheelchair spaces shall comply with Section 1102.4.4.

EXCEPTIONS:

1. Where provided, securement devices shall be permitted to overlap required clearances.
2. Wheelchair spaces shall be permitted to be mechanically or manually repositioned.
3. Wheelchair spaces shall not be required to comply with IDG Section 307.4.

1102.4.4.1 Width and Length.

Wheelchair spaces shall provide a clear width of 36 inches (915 mm) minimum and a clear length of 48 inches (1220 mm) minimum measured to 9 inches (230 mm) minimum above the floor.

1102.4.4.2 Side Entry.

Where wheelchair spaces are entered only from the side, amusement rides shall be designed to permit sufficient maneuvering clearance for individuals using a wheelchair or mobility aid to enter and exit the ride.

1102.4.4.2 Advisory. IDG Section 410.2.1.1, Alternate Side Entry, for platform lifts should be consulted to ensure adequate space is provided.

1102.4.4.3 Permitted Protrusions in Wheelchair Spaces.

Objects are permitted to protrude a distance of 6 inches (150 mm) maximum along the front of the wheelchair space, where located 9 inches (230 mm) minimum and 27 inches (685 mm) maximum above the floor of the wheelchair space. Objects are permitted to protrude a distance of 25 inches (635 mm) maximum along the front of the wheelchair space, where located more than 27 inches (685 mm) above the floor of the wheelchair space.

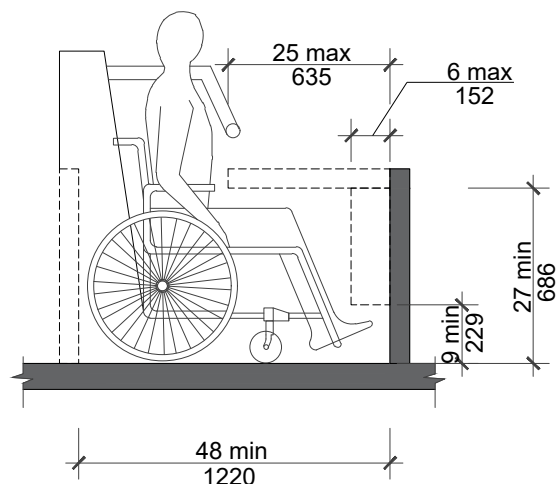


Fig. 1102.4.4.3
Protrusions in Wheelchair
Spaces in Amusement Rides

1102.4.5 Ride Entry.

Openings providing entry to wheelchair spaces on amusement rides shall provide a clear width of 32 inches (815 mm) minimum.

1102.4.6 Approach.

One side of the wheelchair space shall adjoin an accessible route when in the load and unload position.

1102.4.7 Companion Seats.

Where the interior width of the amusement ride is greater than 53 inches (1345 mm), seating is provided for more than one rider, and the wheelchair is not required to be centered within the amusement ride, a companion seat shall be provided for each wheelchair space.

1102.4.7.1 Shoulder-to-Shoulder Seating.

Where an amusement ride provides shoulder-to-shoulder seating, companion seats shall be shoulder-to-shoulder with the adjacent wheelchair space.

EXCEPTION: Where shoulder-to-shoulder companion seating is not operationally or structurally feasible, complying with this requirement shall be required to the maximum extent practicable.

1102.5 Amusement Ride Seats Designed for Transfer.

Amusement ride seats designed for transfer shall comply with Section 1102.5 when positioned for loading and unloading.

1102.5.1 Clear Floor Space.

A clear floor space complying with IDG Section 305.3.1 shall be provided in the load and unload area adjacent to the amusement ride seats designed for transfer.

1102.5.2 Transfer Height.

The height of amusement ride seats designed for transfer shall be 14 inches (355 mm) minimum and 24 inches (610 mm) maximum measured from the surface of the load and unload area.

1102.5.2 Advisory. It is recommended that the device be adjustable so as to accommodate the majority of individuals.

1102.5.3 Transfer Entry.

Where openings are provided for transfer to amusement ride seats, the openings shall provide clearance for transfer from a wheelchair or mobility aid to the amusement ride seat.

1102.5.4 Wheelchair Storage Space.

Wheelchair storage spaces complying with IDG Section 305.3.1 shall be provided in or adjacent to unload areas for each required amusement ride seat designed for transfer and shall not overlap any required means of egress or accessible route.

1102.6 Transfer Devices for Use with Amusement Rides.

Transfer devices for use with amusement rides shall comply with Section 1102.6 when positioned for loading and unloading.

1102.6.1 Clear Floor Space.

A clear floor space complying with IDG Section 305.3.1 shall be provided in the load and unload area adjacent to the transfer device.

1102.6.2 Transfer Height.

The height of transfer device seats shall be 14 inches (355 mm) minimum and 24 inches (610 mm) maximum measured from the load and unload surface.

1102.6.2 Advisory. It is recommended that the device be adjustable so as to accommodate the majority of individuals.

1102.6.3 Wheelchair Storage Space.

Wheelchair storage spaces complying with IDG Section 305.3.1 shall be provided in or adjacent to unload areas for each required transfer device and shall not overlap any required means of egress or accessible route.

1102.7 Signage. Signage related to accessibility of the amusement ride accommodations should comply with IDG Section 703. Signage should be visual, tactile, and audible with transmission for T-coil receivers. Signage shall be permanently and prominently posted at each individual ride.

1103 Recreational Boating Facilities

1103.1 General.

Accessible recreational boating facilities shall comply with Section 1103.

1103.2 Accessible Routes.

Accessible routes serving recreational boating facilities, including gangways and floating piers, shall comply with IDG Chapter 4 except as modified by the exceptions in Section 1103.2.

1103.2.1 Boat Slips.

An accessible route shall serve boat slips.

EXCEPTIONS:

1. Where an existing gangway or series of gangways is replaced or altered, an increase in the length of the gangway shall not be required to comply with Section 1103.2.
2. Gangways shall not be required to comply with the maximum rise specified in IDG Section 405.6.
3. Where the total length of a gangway or series of gangways serving as part of a required accessible route is 80 feet (24 m) minimum, gangways shall not be required to comply with IDG Section 405.2.
4. Where facilities contain fewer than 25 boat slips and the total length of the gangway or series of gangways serving as part of a required accessible route is 30 feet (9145 mm) minimum, gangways shall not be required to comply with IDG Section 405.2.
5. Where gangways connect to transition plates, landings specified by IDG Section 405.7 shall not be required.
6. Where gangways and transition plates connect and are required to have handrails, handrail extensions shall not be required. Where handrail extensions are provided on gangways or transition plates, the handrail extensions shall not be required to be parallel with the floor.

7. The cross slope specified in IDG Sections 403.3 and 405.3 for gangways, transition plates, and floating piers that are part of accessible routes shall be measured in the static position.
8. Changes in level complying with IDG Sections 303.3 and 303.4 shall be permitted on the surfaces of gangways and boat launch ramps.
9. Cleats and other boat securement devices shall not be required to comply with IDG Section 309.3.

1103.2.2 Boarding Piers at Boat Launch Ramps.

An accessible route shall serve boarding piers.

EXCEPTIONS:

1. Accessible routes serving floating boarding piers shall be permitted to use Exceptions 1, 2, 5, 6, 7, and 8 in Section 1103.2.1.
2. Where the total length of the gangway or series of gangways serving as part of a required accessible route is 30 feet (9145 mm) minimum, gangways shall not be required to comply with IDG Section 405.2.
3. Where the accessible route serving a floating boarding pier or skid pier is located within a boat launch ramp, the portion of the accessible route located within the boat launch ramp shall not be required to comply with IDG Section 405.

1103.3 Clearances.

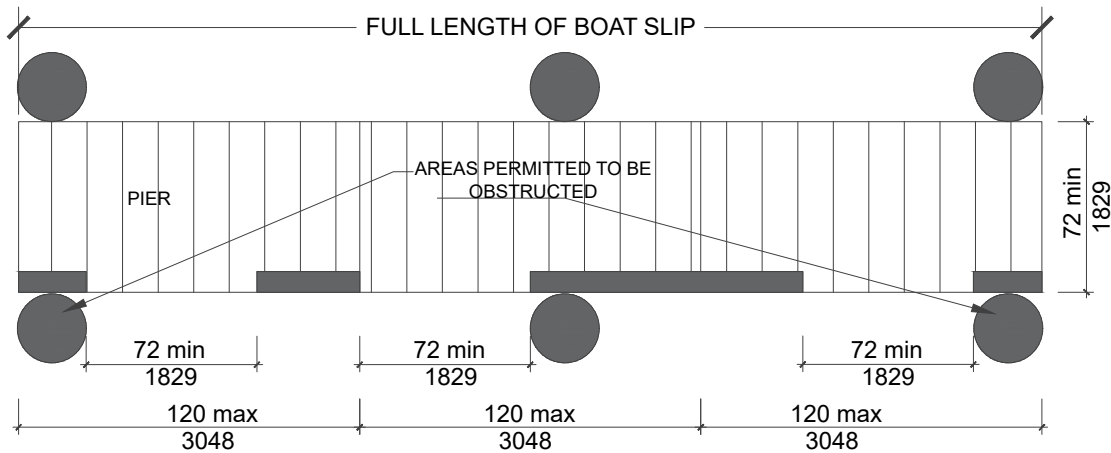
Clearances at boat slips and on boarding piers at boat launch ramps shall comply with Section 1103.3.

1103.3.1 Boat Slip Clearance.

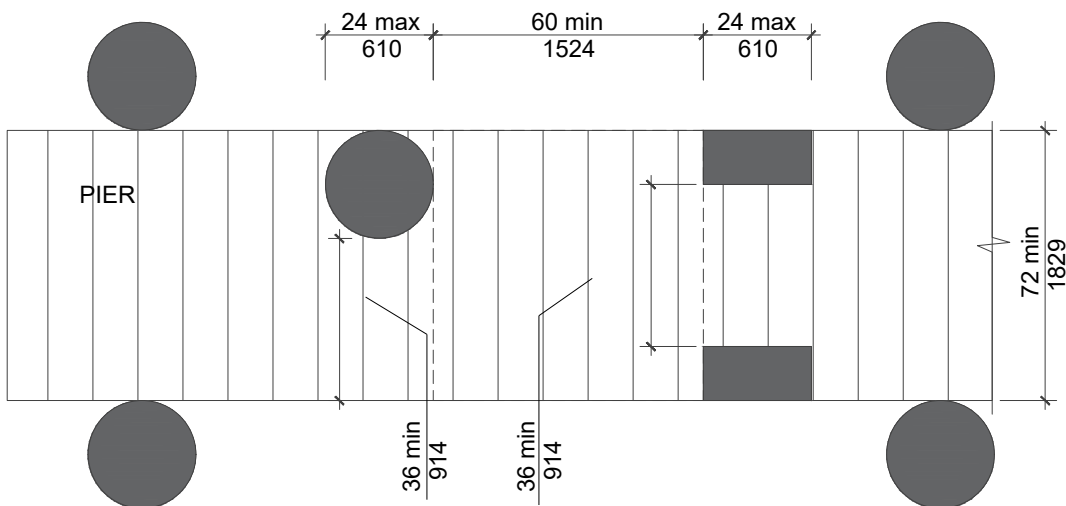
Boat slips shall provide clear pier space 72 inches (1829 mm) minimum in width that extend the full length of the boat slips. Each 10 feet (3050 mm) of linear pier edge serving boat slips shall contain at least one continuous clear opening 72 inches (1829 mm) minimum in width.

EXCEPTIONS:

1. Clear pier space shall be permitted to be 36 inches (915 mm) minimum in width and 24 inches (610 mm) maximum in length, provided that multiple 36-inch (915 mm) wide segments are separated by segments that are 72 inches (1829 mm) minimum in width and 72 inches (1829 mm) minimum in length.
2. Edge protection shall be permitted at the continuous clear openings, provided the edge protection is 4 inches (100 mm) maximum in height and 2 inches (51 mm) maximum in width.
3. In existing piers, clear pier space shall be permitted to be located perpendicular to the boat slip and shall extend the width of the boat slip, where the facility has at least one boat slip complying with Section 1103.3, and further compliance with Section 1103.3 would result in a reduction in the number of boat slips available or result in a reduction of the widths of existing slips.



**Fig. 1103.3.1(a)
Boat Slip Clearance**



**Fig. 1103.3.1(b)
(Exception 1) Clear Pier Space Reduction at Boat Slips**